

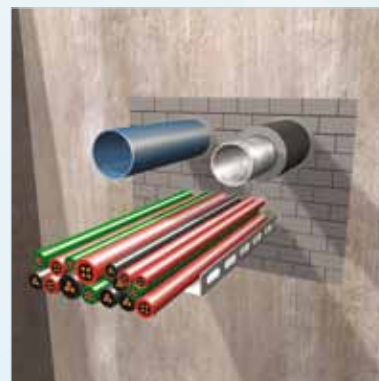
Basic Requirements for Creating a Penetration

Determine the required period of fire resistance of the element, and for loadbearing structures, ascertain the required load. The area to be sealed requires the same fire resistance as the complete floor or wall construction. In order to ensure the stability of the services is maintained under fire conditions, we recommend that all services must be adequately supported at maximum 250mm away from the wall or floor on both sides of the penetration. System fixings, impact protection and suspension elements must be steel. Monal alloys, aluminium etc are not permitted. Accessories such as guard-rails, steel angles, threaded rods. Suspension elements etc. must only be fixed to adjacent solid substrates such as concrete or masonry.



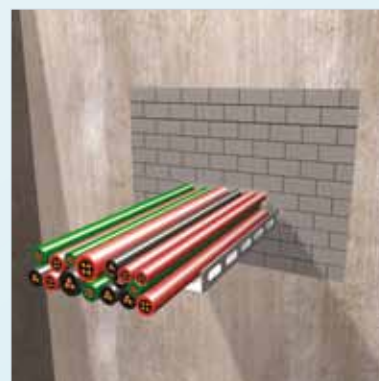
General Information

- ⇒ Resistant to cold smoke
- ⇒ Permanently elastic intumescent brick that expands under fire to close off any apertures.
- ⇒ Suitable for cable and non combustible pipe penetrations;
- ⇒ Intumex® FB is applied in combination with Intumex® MG for cable penetrations;
- ⇒ Maximum opening size in wall and floor 1200 x 1000 mm;
- ⇒ Simple and exact fit, easily cut using standard cutting equipment.
- ⇒ Painting is possible; adhesion and compatibility must be checked.



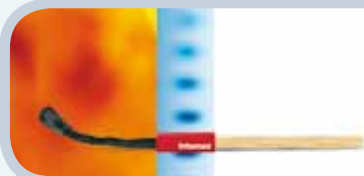
Application Conditions

- ⇒ No known limits.



Consumption Data

m ² – opening	Cable Capacity in %			
	0 %	10 %	30 %	60 %
0.005	1	1	1	1
0.01	1	1	1	1
0.02	3	3	2	1
0.03	4	4	3	2
0.04	6	5	4	2
0.05	7	6	5	3
0.1	14	13	10	6
0.2	28	25	19	11
0.3	42	38	29	17
0.4	56	50	39	22
0.5	69	63	49	28



Intumex[®] FB - Installation Guidelines

Installation: wall condition

- ⇒ Apply Intumex[®] MG for cables and cable bundles;
- ⇒ Install Intumex[®] FB in a staggered orientation, similar to the pattern used for laying of house bricks.;
- ⇒ In the head course cut the bricks oversized (by 5 to 7 mm), compress and insert into remaining gap;
- ⇒ Fix identification label.

Installation: floor condition

- ⇒ Where the seal may be subject to foot traffic, install a suitable steel to the underside of the opening to ensure personnel cannot fall through the seal.
- ⇒ Around plastic pipes and combustible insulation covering metal pipes; fix a steel mesh grid a minimum of 50 mm from the face of the pipe/insulation. The mesh should be secured to the solid substrate surrounding the pipe.;
- ⇒ Apply Intumex[®] MG around cables and cable bundles;
- ⇒ Install Intumex[®] FB in a staggered orientation, similar to the pattern used for laying of house bricks.;
- ⇒ In the head course cut the bricks oversized (by 5 to 7 mm), compress and insert into remaining gap;
- ⇒ Fix identification label.

For additional information on how and where to use this product please refer to our systems database www.intumex.info, or visit our website at <http://www.intumex.at>